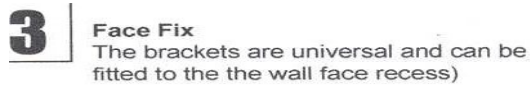
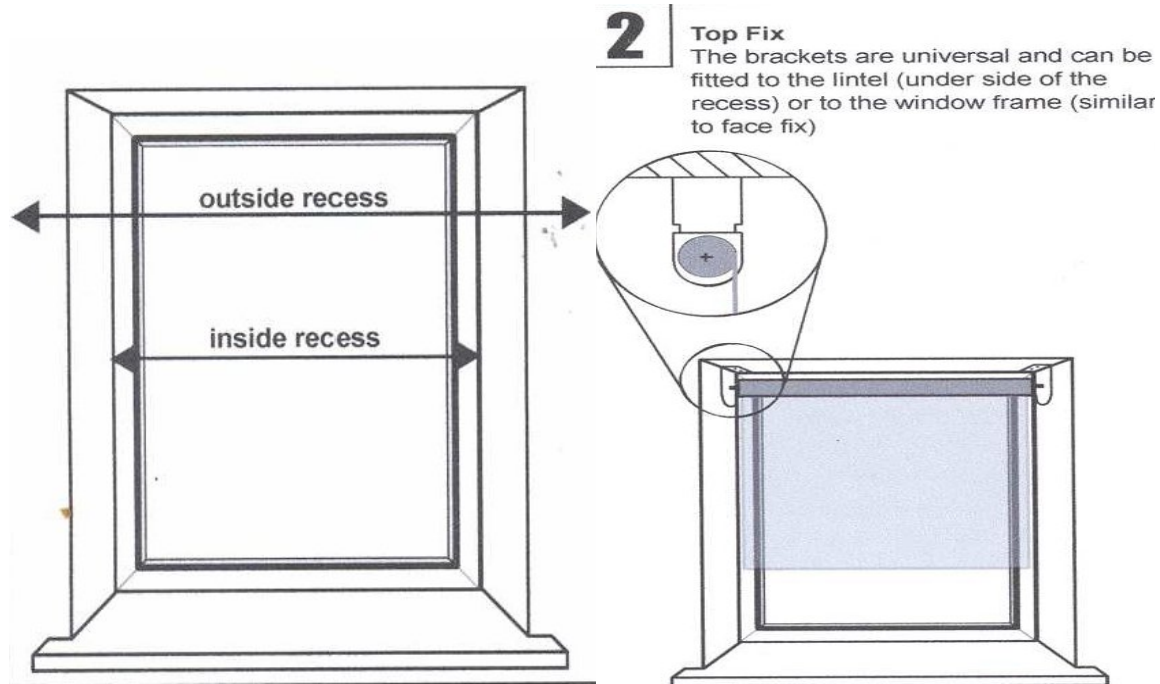


Roller Blinds Fitting Instructions

The Brackets can be top fixed, face fixed or side fixed.

Please note if you have chosen to side fix the covers should not be used.

During the order process you should have decided where to fit your blinds.



Tools Suggested

- screwdriver
- drill (5mm)
- pencil
- tape measure
- spirit level

4. Slide the plastic cover on to the metal brackets.



5. Ensure that your blind will clear any obstructions such as handles or any protruding parts.

6. Always fit the side first that is opposite to the control side. If you have chosen the control on the Right hand side then fit the left hand Bracket First.

7. Mark the position of the first bracket,

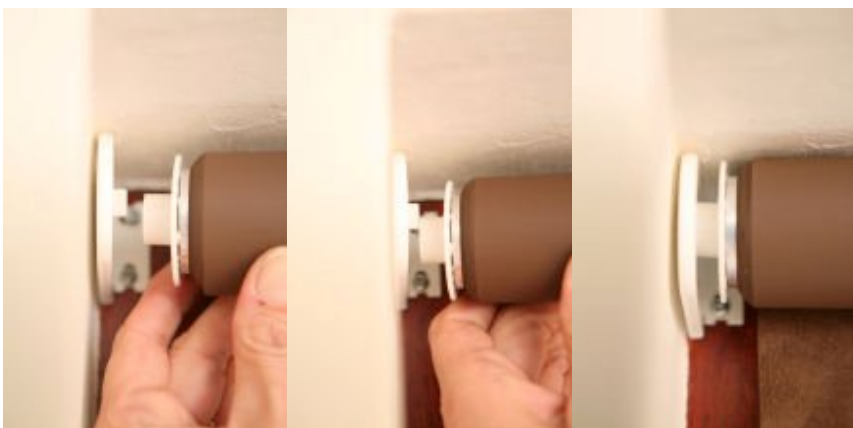
8. Drill holes and Fit the bracket complete with cover. Use 2 screws to secure the bracket firmly into place.



9. Insert the plunger end of the roller blind into this first bracket.

10. Push the Roller into this bracket slightly, to just depress the plunger and then mark the other side where the second bracket will go. The blind should have a 2mm gap between the roller and the bracket, to allow it to turn.

11. Once you have marked where the bracket should go, again drill the holes and secure bracket in place as you did with the first one. Insure that the levels of each of these brackets are level; otherwise your roller blind will not roll up straight.



12. Now insert the roller tube into the brackets. First put in the plunger end and again push it slightly to depress the plunger enough so that you are able to insert the sidewinder/ control end. When inserting the control side you will see that the end of the blind has a star- shaped hole, which makes it possible to mount the blind in different positions.

NB Make sure the chain/ endless cord hangs straight downwards.



13. Your roller blind may have stops on it to save it being over-pulled. These can be taken off and put into the desired position.

